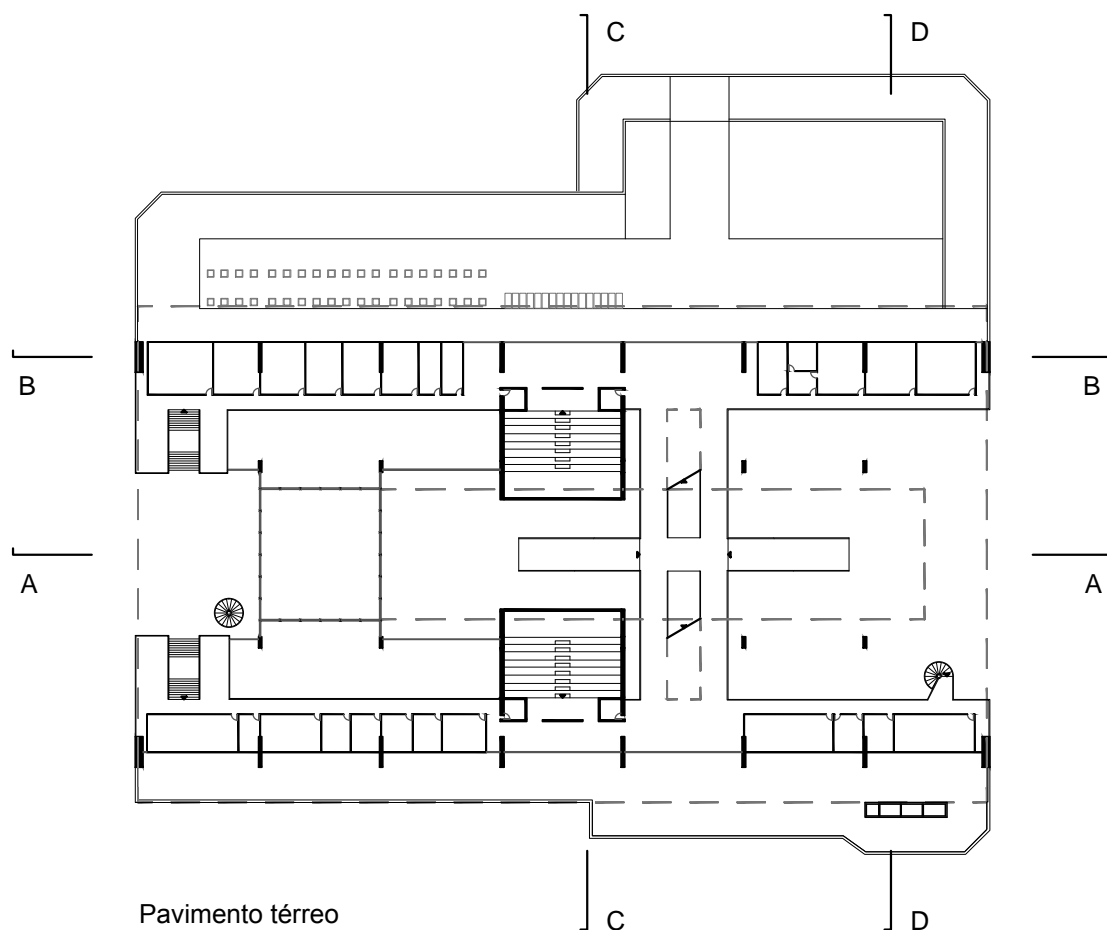
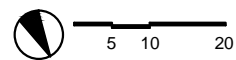


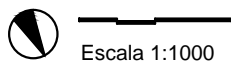
# Faculdade de História e Geografia

Eduardo Corona

São Paulo, SP, 1961

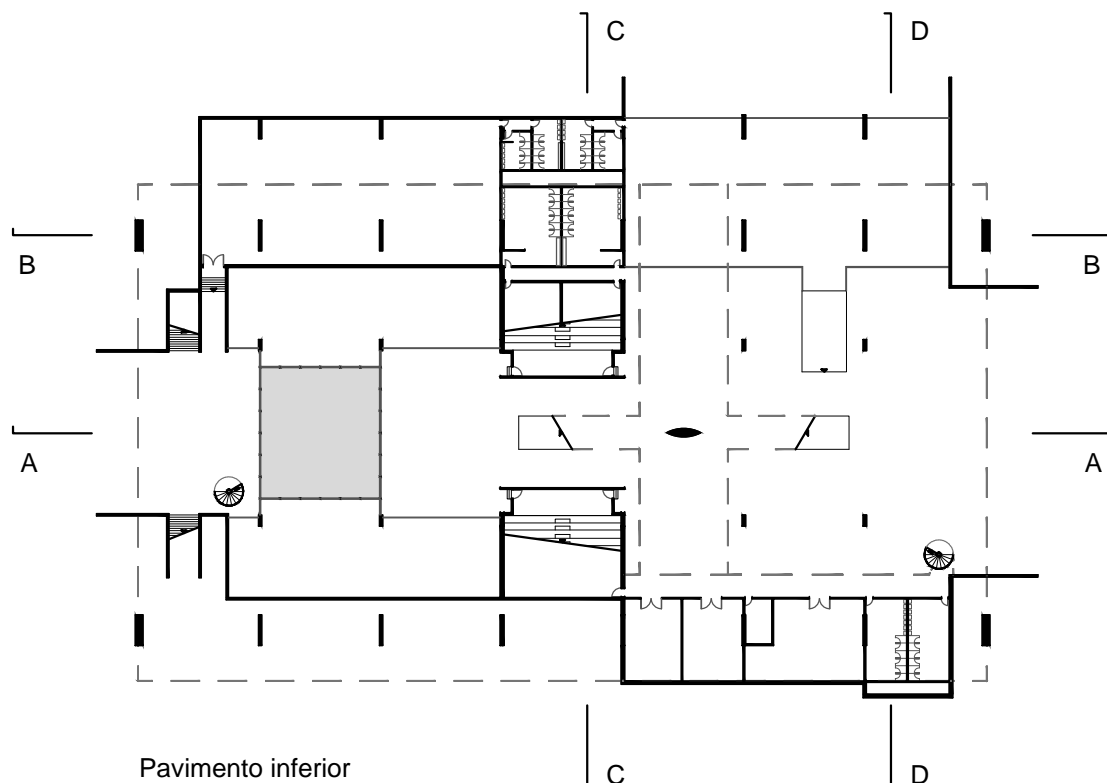


Pavimento térreo



Escala 1:1000

- 01. SALAS DE AULA
- 02. ANFITEATRO

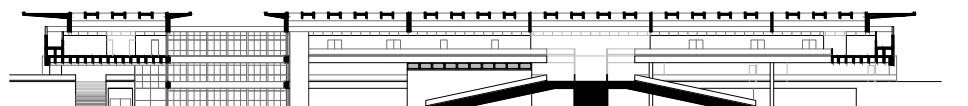


Pavimento inferior

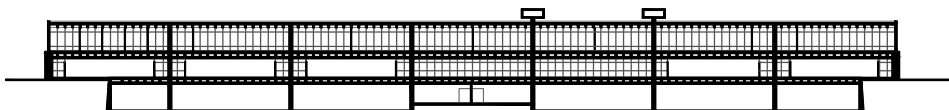


Escala 1:1000

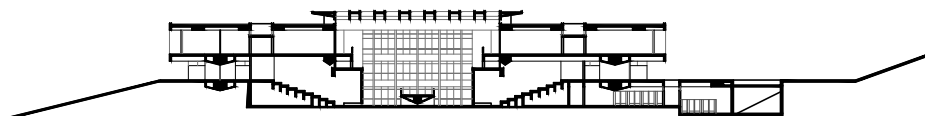
- 03. CENTRO DE ESTU
- 04. MUSEO ETNOGR
- 05. BIBLIOTECA
- 06. MUSEO DA HISTÓ
- 07. MUSEO DA GEOG
- 08. CAFÉ
- 09. GRÊMIO
- 10. DEPÓSITO
- 11. SANITÁRIO FEMIN
- 12. SANITÁRIO MASC



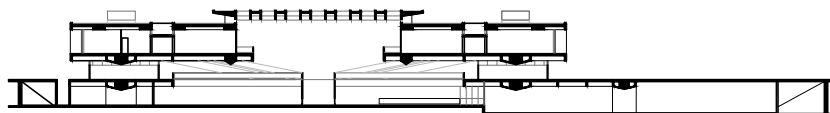
CORTE AA



CORTE BB



CORTE CC



CORTE DD

